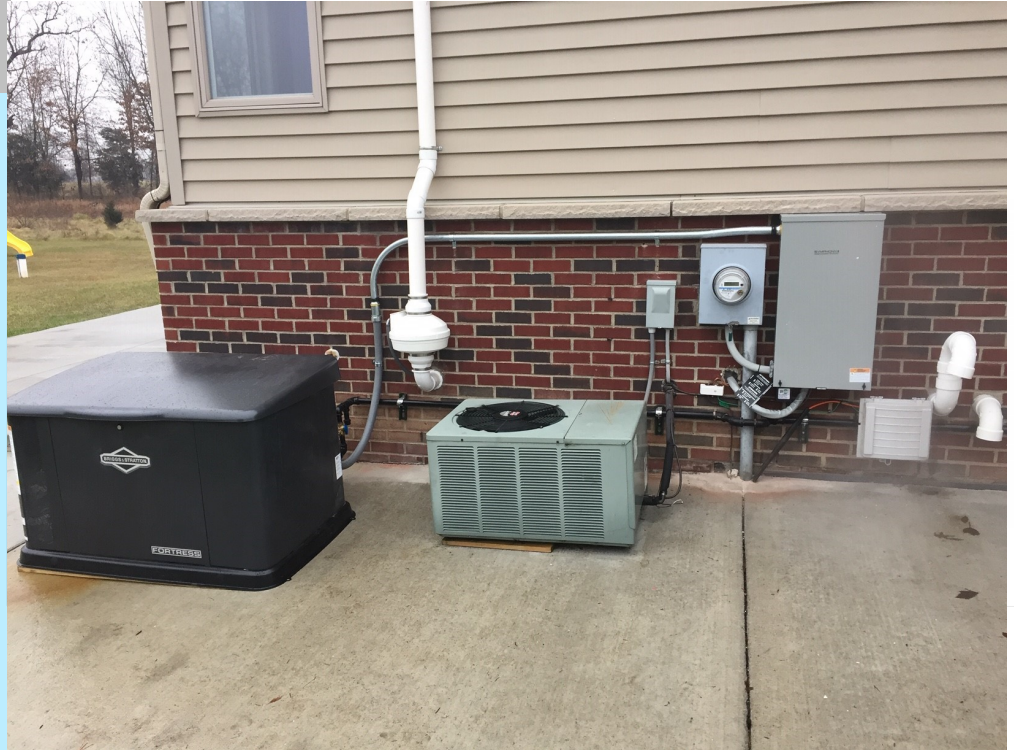


**Reminder to our existing customers – Generator Preventive Maintenance Agreements must be renewed by 4/1/22 to get discounted Rate**

## Safety First!

Protecting yourself and your property are of utmost importance. To avoid injury, it is vital that owners follow key safety measures including:

- **Fumes:** portable and standby generators emit dangerous carbon monoxide fumes, so they should only be used outdoors and away from open windows or doors.
- **Power Cords:** A 30-amp cord or higher is required. The higher the amp of the cord, the more electricity it can transfer.
- **Gas:** Never add fuel while the unit is running or hot. And don't overfill the tank; always allow room for fuel expansion.
- **Good reading:** To protect yourself, your generator and your property, read and follow the manufacturer's instructions.



## How important is it to have a generator for your home?

Our home's power supply is something we don't often pause to think about. It is as natural to us as breathing. As long as both of these processes flow uninterrupted, we take them for granted. The moment either one suddenly stops it becomes immediately apparent that it is at best an inconvenience and at worst an emergency. The functions of most homes rely on power to keep warm or cool, to keep your food supply safe, your plumbing from freezing and as many are now working from home, your livelihood protected. Many homes also need power for medical devices that need to be in continuous operation such as oxygen and C-pap machines. For these families maintaining a steady flow of power is a matter of life and death.

Younger families often learn, through great inconvenience, that generators really need to be a part of protecting your home and families during summer and winter storms. Trees can fall down at all times during the year and take down power lines or the power company itself could experience outages for various reasons. In which case, the portable generator would have to be purchased, the manual read, the installation process mastered and safety

precautions learned. It would need to be carried and placed in a safe place outside of a home or garage or shed. For subsequent uses it becomes important that you maintain the generator between uses and have a ready supply of the fuel it needs to run properly.

For those families that require more security in their power flow, perhaps the elderly who cannot lift and carry the generators or properly place them in a safe spot, or those with medical conditions that must not have an interruption to their devices, a permanently installed stand by generator would be the safest choice. These are also the most convenient for household that would just rather make the onetime investment and not have to worry about maintenance, proper installation or safety concerns in the future. Households that have frequent or prolonged power outages, store large amounts of cold food, or live in a climate where heating and cooling is essential would benefit from investing in a stand by generator as well. Stand by generators start automatically when the power goes out, provide a seamless transition from grid power to generator, are designed to run for extended periods and often improved home value.

## March 2022



**This monthly publication is provided as courtesy of Garry Johnson at Ashcott Electrical.**



Get More Information About Our Services At Our Website: [www.ashcottelectrical.com](http://www.ashcottelectrical.com)

(734) 449-0553